



DEMAND MANAGEMENT INSTITUTE

DMI specializes in providing consulting and engineering services to improve energy efficiency and operation of commercial, industrial, institutional, and large-scale residential facilities in the New England area.

Our focus on how systems operate and use energy has enabled us to provide unparalleled service aimed at reducing energy consumption and cost for our customers. Our clients turn to us for our accurate and timely analysis and experienced knowledge base.

DMI is currently providing energy consulting services for testing centers, retirement communities, schools, offices, and lab buildings. Energy efficiency design and modeling, utility incentives, and commissioning services are being provided for our customers with the utmost attention to detail.

It is important to us to make a difference for our clients through innovative energy solutions and we hope that our efforts encourage sustainable designs in New England. We enjoy the challenge of working on unique buildings with their own set of intrinsic challenges. Contact us today with your energy efficiency challenges!

Areas of expertise

- Waterside HVAC: chillers, boilers, cooling towers, pumping systems, water-source heat exchangers
- Airside HVAC: HVAC systems, rooftop units, unitary equipment
- Controls: air/water temperature, economizers, demand-controlled ventilation, VFDs, energy management systems
- Building shell design: orientation, window glazing, insulation, air barrier
- Refrigeration: supermarkets, food processing & cold storage facilities, ice rinks
- Industrial process: fans, process cooling, compressed air, metalworking, mixing & slurry agitation, wastewater treatment, municipal water supply
- Special facility types: research labs, hospitals, clean room facilities, paper manufacturing, food processing
- Lighting & motors: efficient lighting fixtures, lighting controls, electrically commutated motors

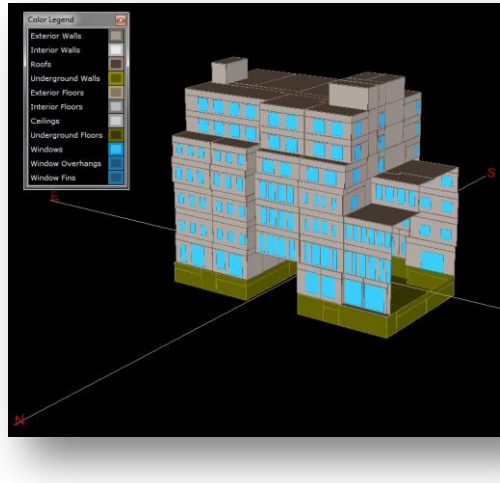


Image of an eQuest building system simulation.

Clients

- Regional energy utilities
- Architects, engineers, & developers
- Building owners, operators, & administrators
- Large commercial & institutional clients
- Manufacturers & industrial process
- Municipalities & public service

Company Affiliations

- The Association of Energy Engineers (AEE)
- Northeast Energy Efficiency Council (NEEC)
- United States Green Building Council (USGBC)
- American Society of Heating, Refrigeration, & Air-Conditioning Engineers (ASHRAE)
- Northeast Sustainable Energy Association (NESEA)



Representative projects

University building

- New construction, 150,000 ft²
- eQuest modeling
- Fundamental LEED commissioning
- Energy savings: \$50,000

Lab

- New construction, 50,000 ft²
- Spreadsheet analysis
- Energy conservation measure analysis
- Measure savings: \$50,000

Residence

- Addition/gut rehab, 35,000 ft²
- eQuest modeling
- Fundamental & enhanced LEED commissioning
- Energy cost reduction: 30%

Office

- New construction, 180,000 ft²
- Design Review
- Fundamental LEED commissioning
- Functional testing
- Certified LEED-CS Gold

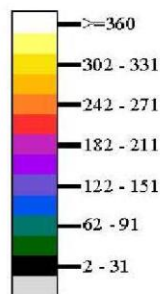
School

- Retrofit, 265,000 ft²
- Spreadsheet analysis
- Return on investment: 300%

DMI uses utility data to create a PowerMap analysis (right) to identify cost reduction opportunities for a building energy system.

Power Demand, kW

Each color represents an incremental 25 kW



Services

Energy auditing

- Facility walk-through
- Infrared Thermography
- Demand response audit
- Metering and PowerMap analysis

Energy analysis/simulation

- Spreadsheet analysis
- eQuest simulation

Energy management systems

- Optimized building controls

Design reviews

LEED services

- Energy modeling
- Fundamental & enhanced commissioning
- Measurement & verification

Utility rebate programs

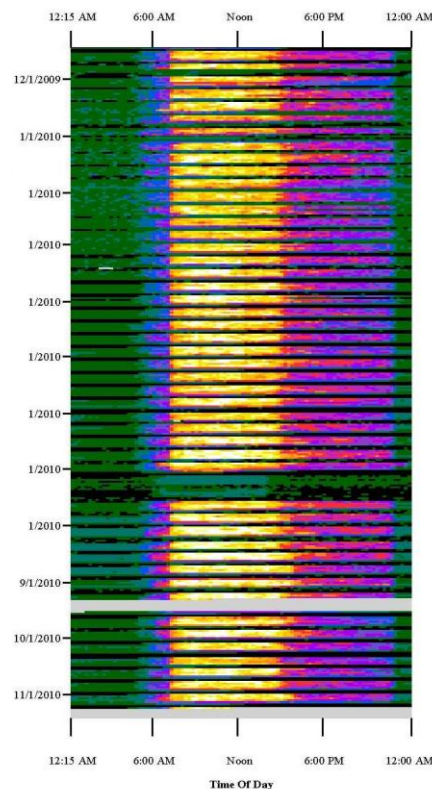
- Equipment incentives

Engineering team

DMI's team of engineers has a wide range of energy efficiency knowledge and experience. We understand the need to provide personalized service for our clients and work directly with project and utility representatives.

Project deliverables

- Technical assistance reports
- Energy conservation measures
- Utility incentive reports
- Commissioning plans
- Functional testing
- Minimum requirements documents



35 Walnut Street
Wellesley, MA 02481

(p) 781 431 1100
(f) 781 431 1109

www.dmiinc.com

info@dmiinc.com

To learn more about our services, please visit our website at www.dmiinc.com or contact us directly at info@dmiinc.com.